



**REGIONAL SPECIALISED METEOROLOGICAL CENTRE - TROPICAL CYCLONES, NEW DELHI  
TROPICAL WEATHER OUTLOOK**

**DEMS-RSMC TROPICAL CYCLONES NEW DELHI DATED 24.01.2025**

**TROPICAL WEATHER OUTLOOK FOR THE NORTH INDIAN OCEAN (THE BAY OF BENGAL AND THE ARABIAN SEA) VALID FOR THE NEXT 168 HOURS ISSUED AT 0600 UTC OF 24.01.2025 BASED ON 0300 UTC OF 24.01.2025.**

**BAY OF BENGAL:**

A fresh cyclonic circulation formed over east Equatorial Indian Ocean & adjoining south Andaman Sea and extends upto 3.1 km above mean sea level at 0300 UTC of today, the 24<sup>th</sup> January, 2025.

Scattered low and medium clouds with embedded intense to very intense convection lay over South Bay of Bengal. Scattered low and medium clouds with embedded moderate to intense convection lay over Central Bay of Bengal and Andaman Sea.

**\*PROBABILITY OF CYCLOGENESIS (FORMATION OF DEPRESSION) DURING NEXT 168 HRS:**

24 HOURS	24-48 HOURS	48-72 HOURS	72-96 HOURS	96-120 HOURS	120-144 HOURS	144-168 HOURS
NIL	NIL	NIL	NIL	NIL	NIL	NIL

**\*NOTE: EVERY 24HR FORECAST IS VALID UPTO 0300 UTC (0830 IST) OF NEXT DAY**

**ARABIAN SEA:**

The cyclonic circulation over southeast Arabian Sea off south Kerala coast at 0.9 km above mean sea level has become less marked at 0300 UTC of today, the 24<sup>th</sup> January, 2025.

Scattered low and medium clouds with embedded intense to very intense convection lay over Southeast Arabian Sea and Comorin Area. Scattered low and medium clouds with embedded moderate to intense convection lay over Maldives area and weak to moderate convection lay over Eastcentral Arabian Sea and Lakshadweep Islands area.

**\*PROBABILITY OF CYCLOGENESIS (FORMATION OF DEPRESSION) DURING NEXT 168 HRS:**

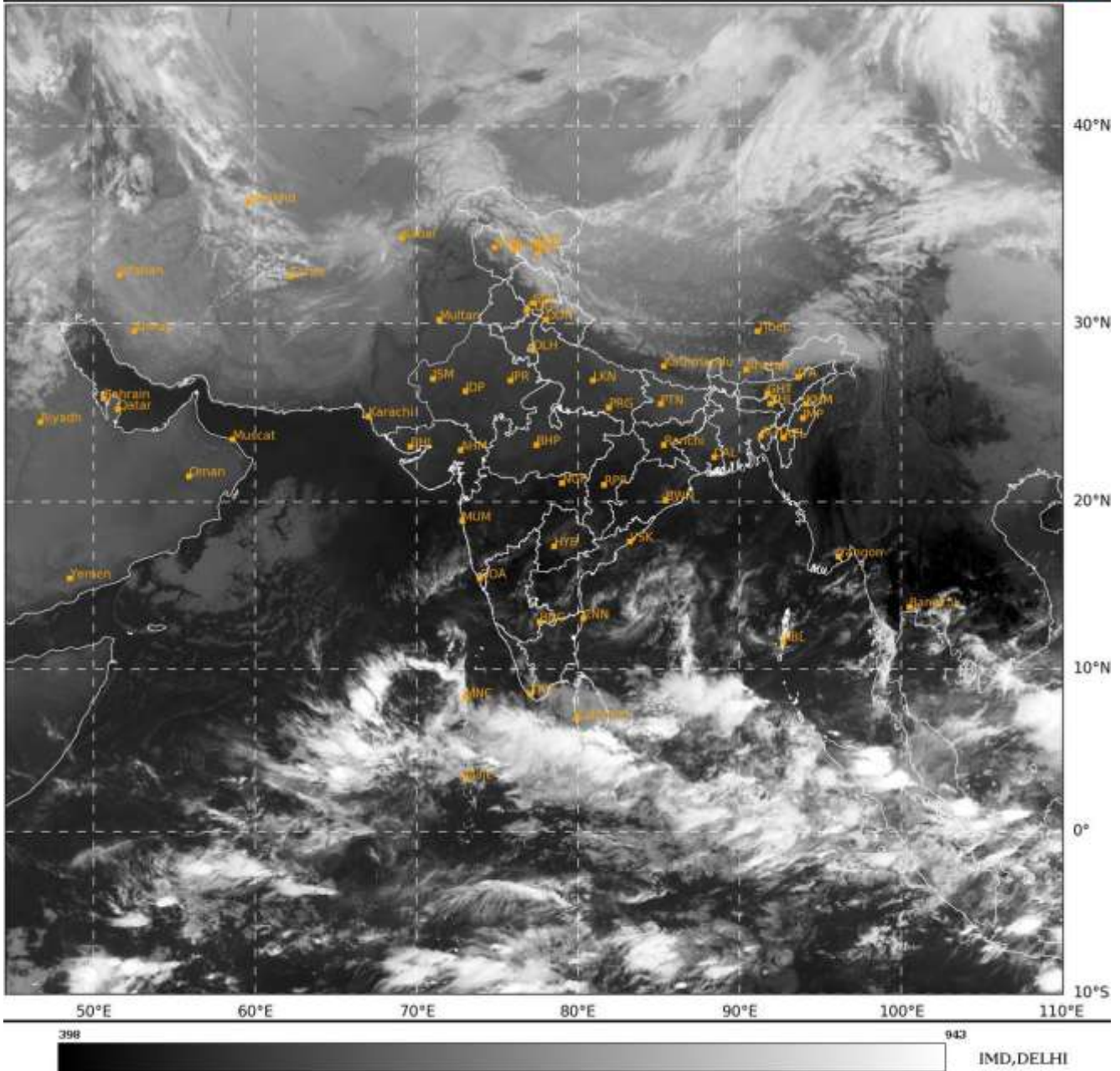
24 HOURS	24-48 HOURS	48-72 HOURS	72-96 HOURS	96-120 HOURS	120-144 HOURS	144-168 HOURS
NIL	NIL	NIL	NIL	NIL	NIL	NIL

**\*NOTE: EVERY 24HR FORECAST IS VALID UPTO 0300 UTC (0830 IST) OF NEXT DAY**

**REMARKS: NIL**

SAT : INSAT-3DR IMG  
IMG\_TIR1 10.8 um  
LIC Mercator

24-01-2025/(0345 to 0412) GMT  
24-01-2025/(0915 to 0942) IST



Cloud distribution: (a) Isolated: <25%, Scattered:25-50%, Broken: 51-75%, Solid:>75%, Convection Intensity: (a) Weak: Cloud Top Temperature(CTT)>-25°C,(b)Moderate:CTT:-25°Cto-40°C,(c)Intense:CTT: -41°Cto -70°Cand(d)VeryIntense::Lessthan -70°C  
PROBABILITYOFCYCLOGENESIS(FORMATIONOFDEPRESSION):NIL:0%,LOW:1-33%,MODERATE:34-66%ANDHIGH:67-100%  
ThisisaguidanceBulletinforWMO/ESCAPPanelMembercountries.VisitrespectiveNationalwebsitesforCountryspecificBulletins